



The Royal Society
of Western Australia



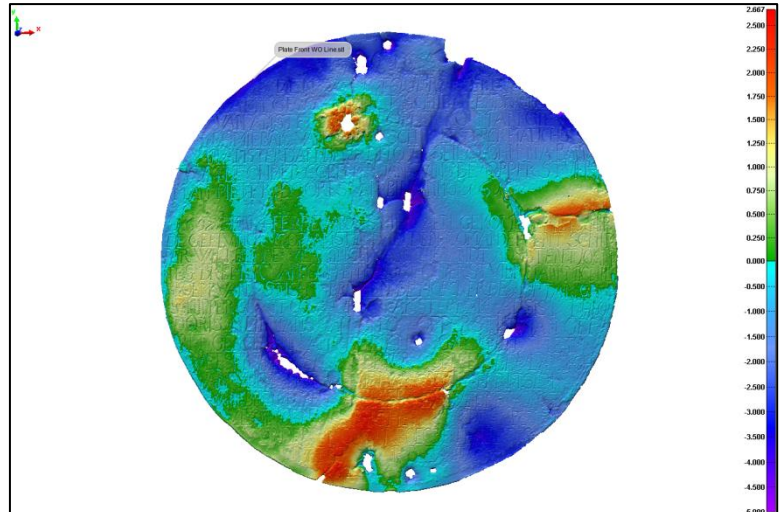
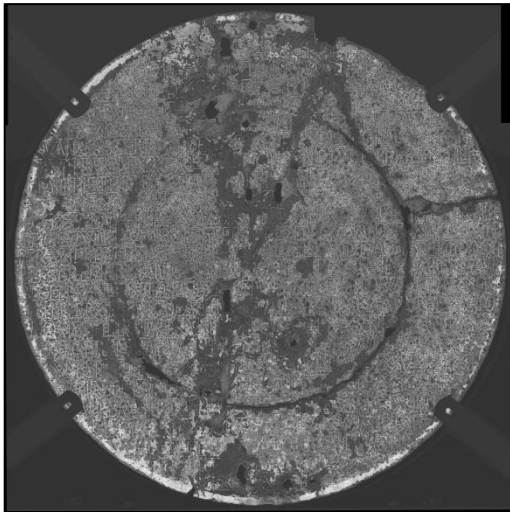
CENTENARY YEAR 1914-2014

The de Vlamingh Plate

Dr Ian Macleod

Executive Director, Fremantle Museums and Maritime Heritage
within the WA Museum

7.00 pm Mon 18th November 2013
Kings Park Administration Centre



The de Vlamingh plate is arguably one of the most significant documents in the hands of a public institution in the state. As part of the lead up to the 400th anniversary of the landing of Dirk Hartog in 1616 at the eponymously named island, a four-day program of X-Ray fluorescence examination was conducted on the obverse and reverse sides of the plate at the Australian Synchrotron facility in Melbourne. This study has revealed the changes in microstructure of the metal plate where it had been hammered flat, and the lines of corrosion due to the mobilisation of iron nail corrosion products etching lead from the pewter alloy have been revealed. Corrosion damage due to the use of arsenical bronze square shanked sheathing nails by Hamelin have also been revealed. Original knife marks can be seen on the former bowl area of the plate on the reverse side. These and many more details will be revealed in the talk.

Ian has 35 years of experience in the corrosion and conservation of metals recovered from historic shipwreck sites.

Members, Guests and Public All Welcome

Enquiries: www.rswa.org.au; secretary@rswa.org.au; or Lynne Milne 0414 400 219